

June 17, 2020

To our valued community and partners:

With staged reopening's happening across Ontario, we wanted to let you know of SCHC plans for Phase 2 of restoring continuity of operations. As always, our primary consideration is the safety of our clients, staff and volunteers. SCHC continues to provide essential services to the Scarborough community throughout this ever changing landscape.

Phase 2 is based upon the Provincial Framework for Re-opening and input from all of the SCHC staff teams. The goal will be to increase delivery of high need services while still adhering to Public Health and Ministry Guidelines. Where face-to-face meetings were introduced in Phase 1, we will be looking to increase those interactions. A social media campaign will be introduced to reassure our client base of all the safety precautions taking place (see attached). Once 629 Markham has reached its capacity, the CHC at the Hub will be opened for additional face to face appointments.

Effective June 22nd, the following program extensions will be taking place:

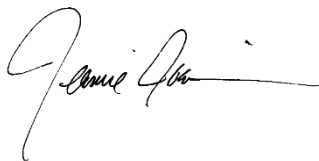
- Reintroduce all Assisted Living programs.
- Introduce home-making services and hire additional staff.
- Reintroduce option of home visits for ABI, Caregiver Wellness.
- Introduce service packages for PSW home visits to Adult Day Program clients.
- Adding Library curb-side pickup for Transportation clients.
- Additional day of virtual services for Active Minds program.
- Food Bank pop-up added at Hub on Tuesdays from 1pm to 3pm.
- Housing will introduce face-to-face visits on site.
- Exploring feasibility of Youth Summer Camp and reintroduction of volunteers when needed.

All other programs and services that were adapted and have been working well will continue as they are until further notice. Please follow us on www.facebook.com/ScarboroughCentreforHealthyCommunities/ or www.instagram.com/schcontario/ for updates and registration for our virtual programs.

We will continue to monitor the impact of Phase 2 changes and continue site openings as required and allowed by provincial directives. It is our hope that all onsite services will be resumed gradually over the summer. However, if needed we will pause and/or revert back to our emergency service plan.

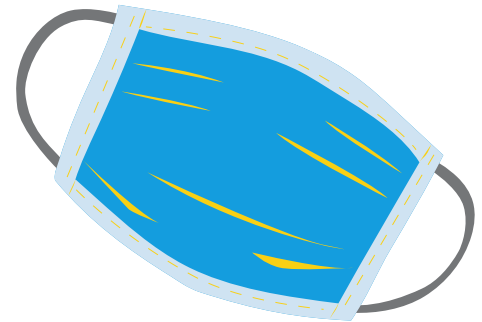
Thanks to all of our partners, funders and supporters for your ongoing commitment to serving the vulnerable population in Scarborough during this challenging time.

Sincerely,



Jeanie Joaquin, MHSc, CHE
Chief Executive Officer

WELCOME BACK! SCHC IS KEEPING YOU SAFE! HERE'S HOW...



Infection Protection and Control Measures:

- Deep cleaning every day
- Cleaning high-touch areas every 2 hours
- Cleaning all equipment and exam/counseling rooms after each client visit
- Staff are wearing masks and face shields
- Daily screening of staff before onsite shifts
- Screening of all clients prior to appointment, session or program
- Hand sanitizing stations and facial tissues available in each program area
- Safety posters and health signages throughout buildings

Physical Distancing Measures:

- Spatial measures using signage and floor decals
- Spacing appointments to limit interaction between clients
- Spacing seating to allow for 2 meters between clients
- Removing unnecessary furniture for additional moving space

